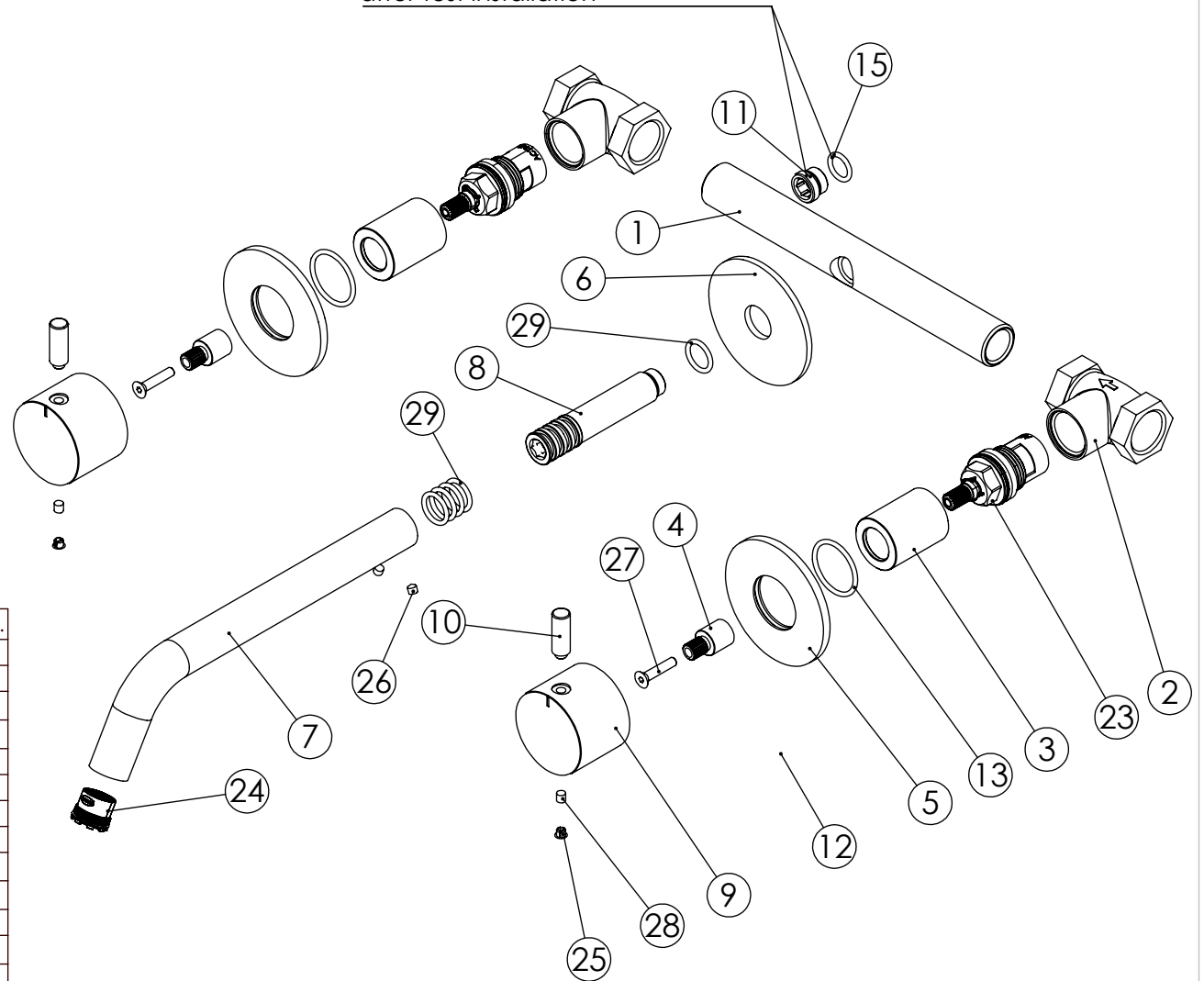


ESC. 1:5	Misturador Embutir Lavatório			
Desenhou 16/10/2018	<b>SANITERRA<sup>®</sup></b>	MILANO SLIM		
Rev: 1 31/05/2022		1511016C1		

Remove ref:101163 and 001367  
after test installation



ITEM NO.	DESCRIPTION	REF.	QTY.
1	Tubo Misturadora Embutir Cruzeta070	100857	1
2	Caixa Passador G1-2 Cruzeta070	100856	2
3	Campanula Passador M24x1 Cruzeta070	100858	2
4	Aumento Manipulo Cilindrico Cartucho Distribuidor	100686	2
5	Pater Fixação Bica Teto Cilindrica	100336	2
6	Pater Bica Cilindrica Parede	100150	1
7	Bica Parede Slim	100410	1
8	Ponteira Bica Parede	100038	1
9	Manipulo Cilindrico P_Distribuidor	100162	2
10	Rabo Manipulo Cilindrico Embutidos	100167	2
11	Taco Ponteira Bica Parede	101163	1
12	Box P CZ070 - Peça Pena Bloc 28 Negro 5+50x35x24,8mm	100938	2
13	Orings 23.00x2.00 NBR 70	001393	2
14	Orings 8.00x1.90 NBR 70	001349	1
15	Orings 10.00x2.00 NBR 70	001367	1
23	Cartucho Cerâmico 90°	AC1360	2
24	Perlator 16,5x1 Cilindrico/Quadra	AC850A	1
25	Dístico em ABS de 5.5mm Cromado	LH-PLCR4	2
26	Perno Umbrako Din 914 M4-4 Inox A-2	09140400040IN	2
27	Parafuso Embeber M4x20	79910400200IN	2
28	Perno Umbrako Din 914 M4-5 Inox A-2	09140400050IN	2
29	Orings 10.00x2.00 NBR 70	001367	5

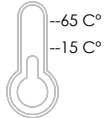
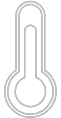
ESC. 1:3	Misturador Embutir Lavatório		
Desenhou 16/10/2018	<b>SANITERRA®</b>	MILANO SLIM	
Rev: 1 31/05/2022		1511016C1	

# SANITERRA® 1°

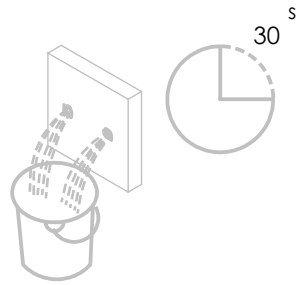
Service:



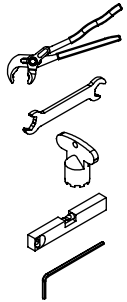
MAX  
80 C°



-65 C°  
-15 C°



30<sup>s</sup>



Adjustable Pliers

16/17

Special Key 16,5

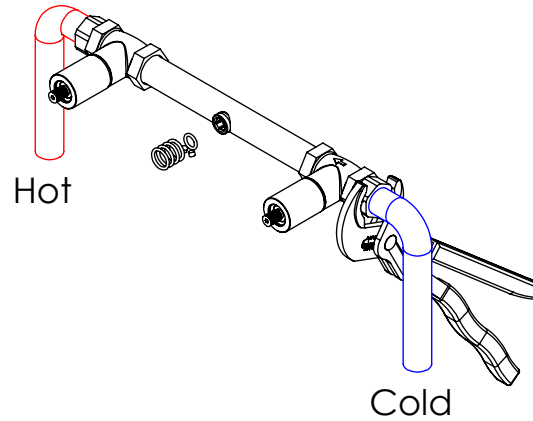
level

2 / 6 / 8mm

## Washbasin Mixer Installation Manual

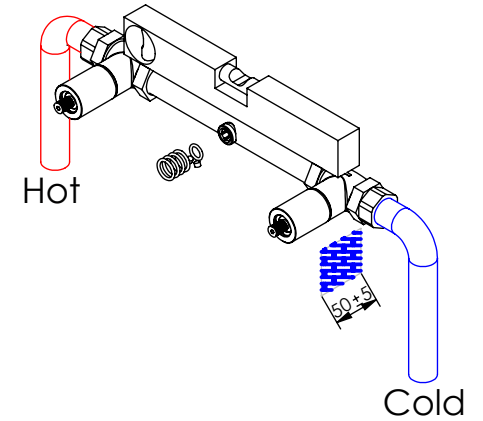
### 2°

Conection:



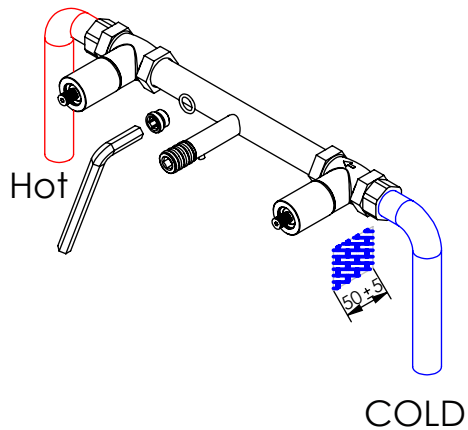
### 3°

Fixed:

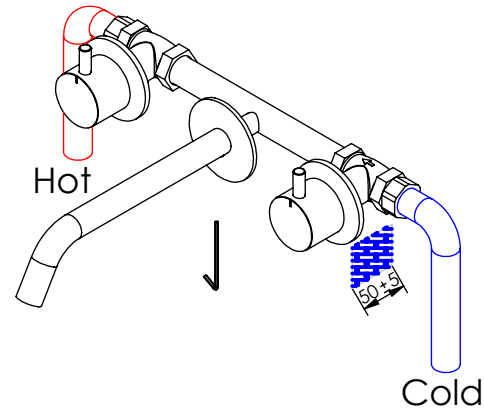


### 4°

Remove Protection:



### 5°



Maintenance:

